

DAILY RESEARCH, 14 JULI 2020

PT PROFINDO SEKURITAS INDONESIA

**GD PERMATA KUNINGAN LT 19
JL KUNINGAN MULIA KAV 9C GUNTUR SETIABUDI JAKARTA SELATAN 12980**

TELP +62 21 8378 0888

EMAIL : CUSTOMERSERVICE@PROFINDO.COM

WWW.PROFINDO.COM | PROCLICK.PROFINDO.COM

MARKET MOVERS



Bursa Amerika DOW ditutup menguat didorong kemajuan uji coba vaksin covid 19. Selain itu investor menanti rilis data laporan kinerja perusahaan Q2 yang diperkirakan membaik. Dow +0.04%, S&P -0.94%, Nasdaq -2.13%

Bursa saham Eropa ditutup menguat didorong rencana stimulus dari ECB yang akan menggelontorkan dana € 750 Miliar untuk penanggulangan covid 19. Indeks FTSE +1.33%, DAX +1.32%, CAC +1.73%

Bursa Saham Asia dibuka bergerak variatif dimana investor menanti rilis data Trade Balance dan GDP China yang diperkirakan akan tumbuh positif. Indeks Hang Seng +0.17%, Shanghai -0.03%, Nikkei -0.87%, KOSPI -0.54%, ASX -0.72%

Harga minyak mentah dunia melemah seiring meningkatnya kasus virus covid 19 yang semakin bertambah menghambat pemulihan ekonomi dunia. Harga Emas menguat setelah semakin meningkatnya jumlah kasus covid 19 di AS. WTI -1.62%, Brent Oil -0.31%, Gold -0.82%.

IHSG pada perdagangan hari ini diperkirakan akan **BULLISH** dengan Range pergerakan **5020-5139** dengan saham-saham yang dapat diperhatikan : **ANTM ERAA AKRA TINS LSIP BJBR**

MARET DATA

AMERIKA

DOW 30	26,085.80	+10.50	+0.04%
S&P 500	3,155.22	-29.82	-0.94%
NASDAQ	10,390.84	-226.60	-2.13%

EUROPE

DAX	12,799.97	+166.26	+1.32%
FTSE 100	6,176.19	+80.78	+1.33%
CAC 40	5,056.23	+85.75	+1.73%

ASIA

SHANGHAI	3,442.12	-1.16	-0.03%
HANGSENG	25,772.12	+44.71	+0.17%
SET	1,342.37	-8.13	-0.60%
KOSPI	2,174.36	-11.70	-0.54%
JCI	5,064.45	+33.19	+0.66%
NIKKEI	22,587.50	-197.24	-0.87%
ASX	5,934.30	-43.20	-0.72%

COMMODITIES

GOLD	1,799.25	-14.85	-0.82%
WTI OIL	39.45	-0.65	-1.62%
BRENT OIL	42.12	-0.13	-0.31%
COAL	56.20	+0.65	+1.17%
PALM OIL	2463	+8.00	+0.33%
TINS	17,287.50	-115.00	-0.66%
NICKEL	13,545.00	-175.00	-1.28%

EVENT & ECONOMIC CALENDER

ECONOMIC CALENDER :

INDONESIA

150720	TRADE BALANCE (JUN)
160720	INTEREST RATE DECISION
170720	MOTORBIKE SALES (YoY) (JUN)

GLOBAL

130720	ECB PANETTA SPEECH
	JAPAN TERTAIRY INDUSTRY INDEX (MoM) (MAY)
	BoE GOV BAILEY SPEECH
	US CONSUMER INFLATION EXPECTATIONS (JUN)
	CHINA FDI (YTD) YoY JUN
140720	CHINA TRADE BALANCE (JUN)
	JAPAN INDUSTRIAL PRODUCTION YoY FINAL MAY
	GERMAN INFLATION RATE
	UK TRADE BALANCE (MAY)
	UK GDP YoY (MAY)
	UK MANUFACTURING PRODUCTIONS (YoY) (MAY)
	EURO INDUSTRIAL PRODUCTION (MoM) (MAY)
	US INFLATIONS RATE (YoY) (JUN)
150720	US API CRUDE OIL STOCK CHANGE (JUL)
	UK INFLATION RATE (YoY) (JUN)
	US INDUSTRIAL PRODUCTION (MoM) (JUN)
160720	CHINA GDP GROWTH RATE (YoY) (Q2)
	CHINA INDUSTRIAL PRODUCTION (YoY) (JUN)
	CHINA RETAIL SALES (YoY) (JUN)
	FRANCE INFLATION DATE (YoY) (FINAL) (JUN)
	ECB INTEREST RATE DECISION
	US RETAIL SALES (MoM) (JUN)
	US INITIAL JOBLESS CLAIMS (JUL)

CORPORATE ACTION :

DEVIDEN

130720	VINS RP 9.5 (CUM 1307, PAYMENT 0608)
140720	DVLA RP 70 (CUM 1407, PAYMENT 0708)
150720	XISB RP 2.03 (CUM 1507, PAYMENT 2407)
	SRIL USD 0.00007 (CUM 1507, PAYMENT 0708)
	ROTI RP 25.73 (CUM 1507, PAYMENT 2707)
160720	ELSA RP 12.211 (CUM 1607, PAYMENT 0708)
170720	PUDP RP 1 (CUM 1707, PAYMENT 0708)

RUPS

130720	KEJU HKMU BRNA
140720	CMNP ASBI
150720	TOTL SMAR IPCM INDS INDF ICBP DILD CAKK
160720	SIMP SDPC MAYA LSIP JKON JECC BACA
170720	TGRA POWR LPIN INDO GHON BEKS

IPO

RIGTH ISSUE

JAKARTA COMPOSITE INDEX



PREVIOUS 13 JULI 2020

CLOSING	5064.447	+0.660%
TRANSACTION	IDR 6.27 TRILLION	
FOREIGN NETT	IDR 40 BIO (SELL)	

PREDICTION 14 JULI 2020

BULLISH
RANGE 5020-5139

MORNING STAR
STOCHASTIC : DOWNTREND
MACD : HISTOGRAM POSITIF DAN NETRAL

TECHNICAL RECOMENDATION



ANTM – PT ANEKA TAMBANG TBK

CLOSING 13/7/2020 RP 675 (+4.65%)

BUY

TARGET PRICE 750

STOPLOSS < 645

BREAK OUT CUP & HANDLE

STOCHASTIC : UPTREND

MACD : HISTOGRAM POSITIF DAN UPTREND

TECHNICAL RECOMENDATION



ERAA – PT ERAJAYA SWASEMBADA TBK

CLOSING 13/7/2020 RP 1380 (+4.9%)

BUY

TARGET PRICE 1805

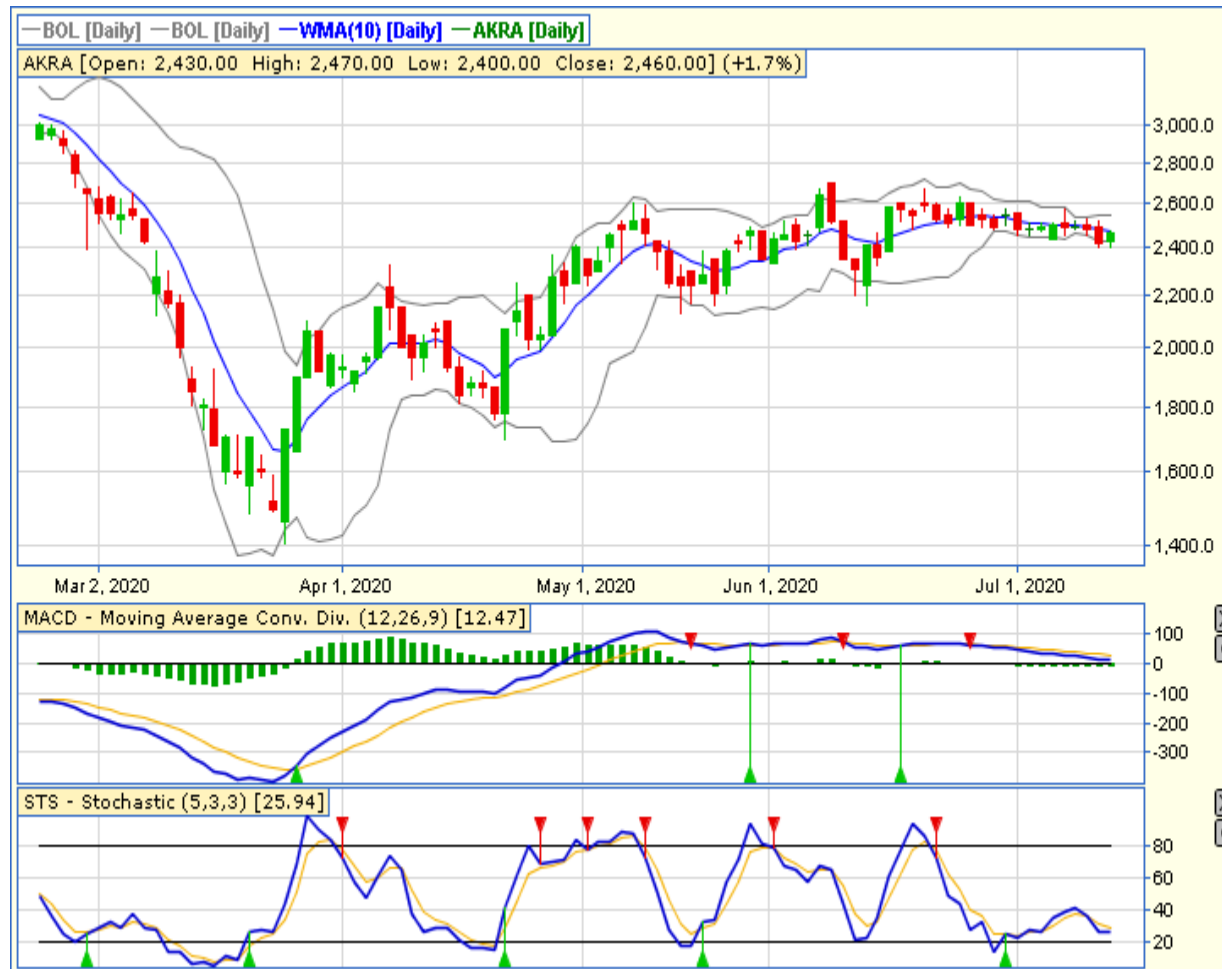
STOPLOSS < 1290

BREAK OUT TRIANGLE

STOCHASTIC : UPTREND

MACD : HISTOGRAM POSITIF DAN UPTREND

TECHNICAL RECOMENDATION



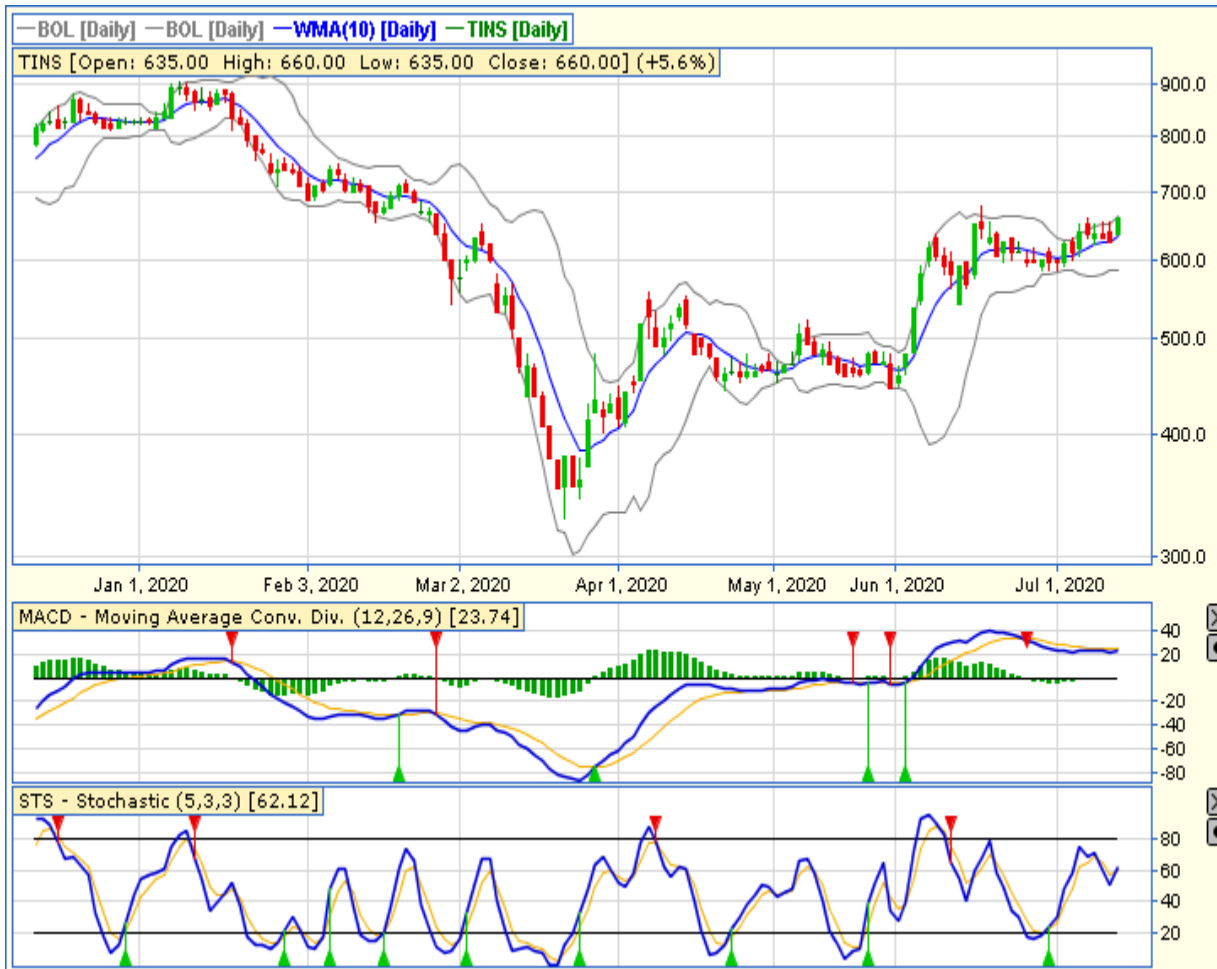
AKRA – PT AKR CORPORINDO TBK

CLOSING 13/7/2020 RP 2460 (+1.7%)

**SELL ON STRENGTH
TAKE PROFIT 2570**

**BULLISH HARAMI
STOCHASTIC : OVERSOLD
MACD : HISTOGRAM NEGATIF DAN LOWER AREA**

TECHNICAL RECOMENDATION



TINS – PT TIMAH TBK

CLOSING 13/7/2020 Rp 660 (+5.6%)

**SELL ON STRENGTH
TAKE PROFIT 680**

**BREAK OUT TRIANGLE
STOCHASTIC : UPTREND
MACD : HISTOGRAM POSITIF DAN GOLDEN
CROSS**

TECHNICAL RECOMENDATION



LSIP – PT PP LONDON SUMATRA INDONESIA TBK

CLOSING 13/7/2020 RP 875 (+3.6%)

BUY

TARGET PRICE 920

STOPLOSS < 855

BULLISH HARAMI

STOCHASTIC : OVERSOLD

MACD : HISTOGRAM NEGATIF MENGECIL DAN BERSIAP GOLDEN CROSS

TECHNICAL RECOMENDATION



BJBR – PT BPD JAWA BARAT DAN BANTEN TBK

CLOSING 13/7/2020 RP 945 (+7.4%)

**SELL ON STRENGTH
TAKE PROFIT 1005**

**BREAK OUT TRIANGLE
STOCHASTIC : UPTREND
MACD : HISTOGRAM POSITIF DAN UPTREND**

RESEARCH TEAM



YULIANA

**RESEARCH ANALYST &
CORPORATE FINANCE**



DIMAS WP PRATAMA, CSA

TECHNICAL ANALYST

EQUITY CAPITAL MARKET TEAM



JESSIE JAMES

HEAD OF EQUITY SALES



PRASETYO NUGROHO

HEAD OF DEALING ROOM



GABRIELLA PRATIWY

HEAD OF ONLINE TRADING